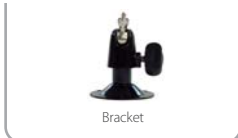


2.1MEGAPIXEL HD-SDI 59.94FPS BROADCAST PINHOLE LENS MINI SQUARE CAMERA

HDC-M23CSP

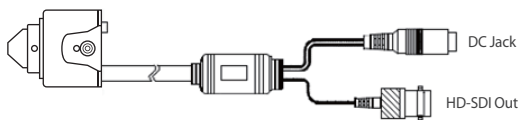
ACCESSORY (Option)



→ KEY FEATURES

- 1/3" 2.1Megapixel PANASONIC CMOS Image Sensor
- Full HD 1920x1080 (29.97p, 59.94p, 59.94i)
- HD 1280x720 (29.97p, 59.94p)
- HD-SDI, 3G-SDI & Analog CVBS Video Out
- Megapixel Con Pinhole Lens f=4.3mm
- DNR (Digital Noise Reduction)
- WDR (Wide Dynamic Range) : 1080p/30fps
- Min. Illumination of 0.01Lux
- Sens-up
- Auto White Balance
- Defog
- LSC (Lens Shading Compensation)
- ACE (Adaptive Contrast Enhancer)
- DIS (Digital Image Stabilizer)
- Motion Detection & Privacy Mask
- Digital Zoom
- Enable Reverse Display by Mirror & Flip
- Max. Transmission : 100m (5C-HFBT Cable Use)
- OSD Control

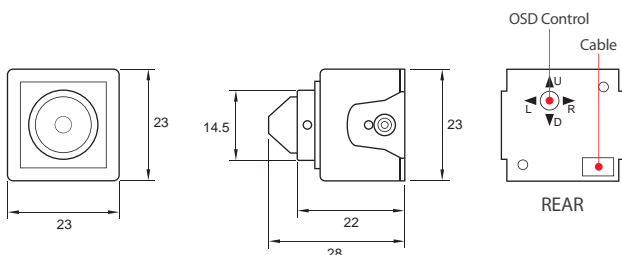
→ CABLE



1. DC Jack + HD-SDI Out
2. DC Jack + HD-SDI Out + CVBS Out (Option)

→ DIMENSIONS

Unit : mm



→ SPECIFICATIONS

HDC-M23CSP

Image Sensor	1/3" 2.1Megapixel PANASONIC CMOS Sensor
Total Pixels	2010(H) x 1108(V) / 2,227,080 (pixels)
Effective Pixels	1944(H) x 1092(V) / 2,122,848 (pixels)
Scanning System	Progressive
Sync System	Internal
Resolution	More than 1000TVL
Video Output	HD-SDI / 3G-SDI
	1920x1080 (29.97p, 59.94p, 59.94i)
	1280x720 (29.97p, 59.94p)
	Composite (1.0Vp-p, 75Ω)
	Color Bar Signal
S/N Ratio	More than 50dB (AGC Off)
Min. Illumination	0.1Lux (F1.2, 50IRE, AGC Max.) / DSS x4 : 0.01Lux
Lens	Megapixel Con Pinhole Lens, 1/2.7" 4.3mm, M12
Electronic Shutter Speed	Manual (1/30(25) ~ 1/30,000sec.)
Sens-up	x2 ~ x32
White Balance	Auto / AutoEXT / Preset / Manual (R-Gain, B-Gain)
Back Light	Off / HLC / BLC / WDR
WDR	Off / Low / Middle / High
Day & Night	Auto / Color / B&W
DNR	Off / Low / Middle / High
LSC	Off / On
Defog	Off / On
Digital Zoom	x1 ~ x16
Privacy Mask	Yes
Motion Detection	Yes
Mirror / Flip	Off / On
Camera ID	Yes
Serial Port	No
ICR (Filter Change)	No
Operating Temperature	-10°C ~ 50°C
Storage Temperature	-20°C ~ 70°C
Operating Humidity	Under 90% Non-condensing
Power Source	DC 12V 1.0A
Power Consumption	150mA, 1.8W
Dimension	23(W) x 23(H) x 28(D)mm
Weight	45g

• Design and specification are subject to change without notice.